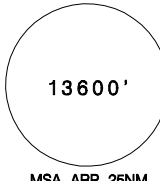
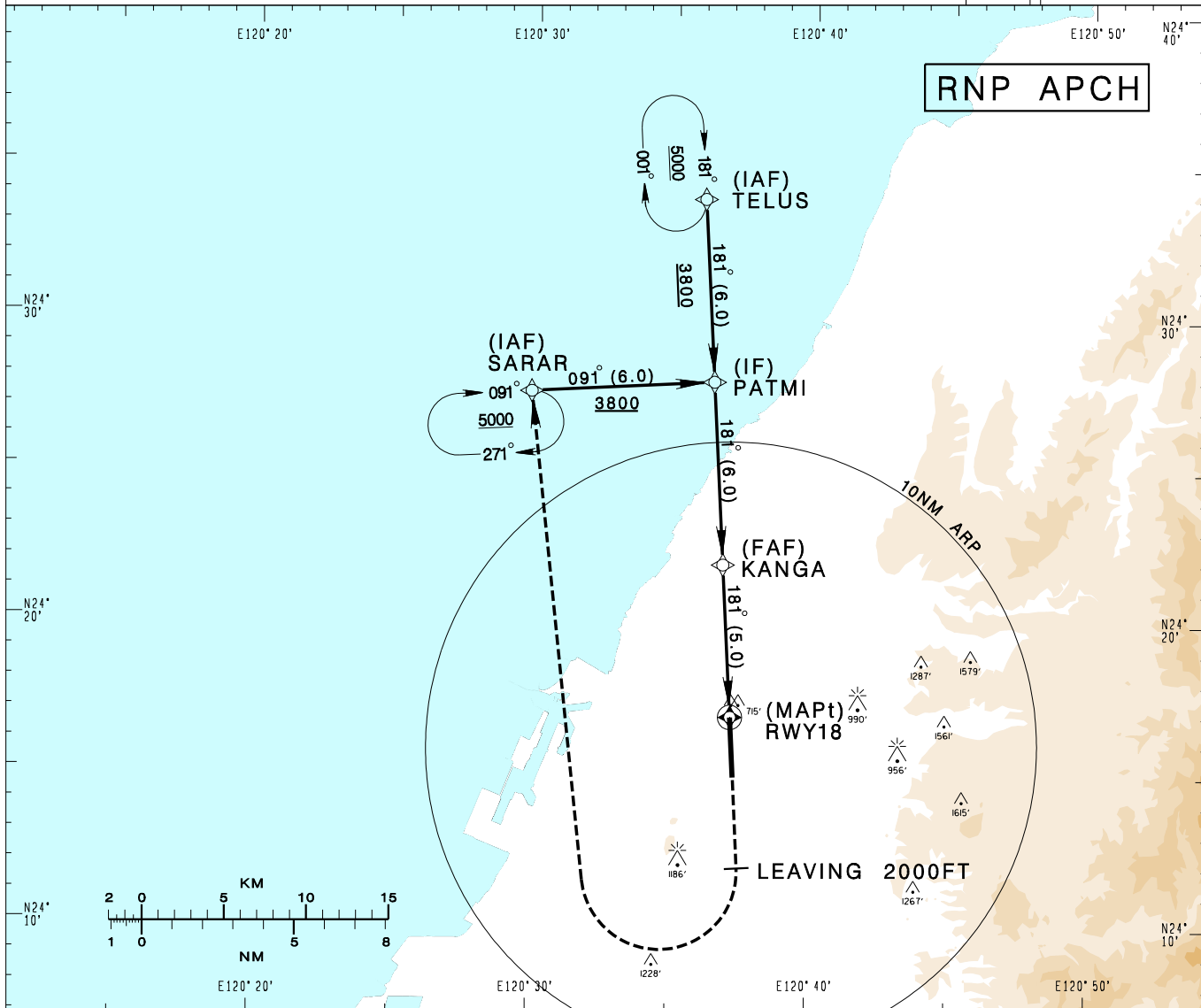


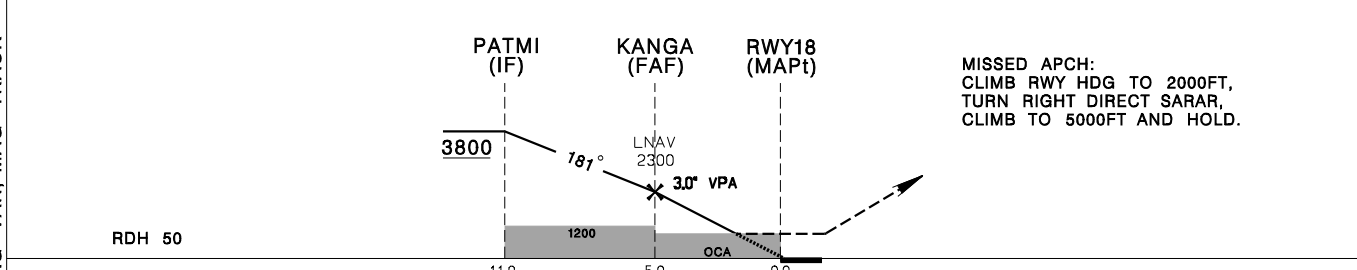
臺中/清泉崗機場
TAICHUNG/CINGCYUANGANG AD

RCMQ
RNP RWY18

TAIPEI APP 130.1 129.6	TAICHUNG TWR 118.75 120.25	ATIS 127.75	 <p>13600'</p> <p>MSA ARP 25NM</p>	
Apt Elev: 665'	Rwy18 THR Elev: 653'	Trans Level: FL130		Trans Alt: 11,000'
BEARINGS ARE MAGNETIC; DISTANCES ARE NAUTICAL MILES; ELEVATIONS, HEIGHTS IN FEET				



5	4	3	2	1	DIST (NM) to THR 18
KANGA					DIST (NM) to Next WPT
2300	1980	1660	1340	1030	ADVISORY ALT



MINIMA (OCA IN FT, VIS IN M, OCH IN FT)						NOTE BARO-VNAV NOT AUTHORIZED BELOW 0°C.
CATEGORY	A	B	C	D		
LNAV/VNAV	STRAIGHT IN	950/1400 297	950/1400 297	950/1400 297	950/1400 297	
LNAV	STRAIGHT IN	980/1600 327	980/1600 327	980/1600 327	980/1600 327	

CHANGES: UPDATE MAG VAR; MAG TRACK